



Human Proteinase 3 ELISA Kit

Vertrieb:

L O X O GmbH Immunbiologie Biochemie, Produkte und Systeme
Postfach 11 30 69215 Dossenheim
Telefon +49 (0) 62 21 - 86 80 23 **FAX** +49 (0) 62 21 - 86 80 255
E-Mail: info@loxo.de **Internet:** www.loxo.de

Assaypro LLC
3400 Harry S Truman Blvd
St. Charles, MO 63301
T (636) 447-9175
F (636) 395-7419
www.assaypro.com

Hinweis/Note:

Der Packungsbeileger dient nur als erste Information.
Der relevante Packungsbeileger liegt der Ware bei.

The datasheet is only a first information.
The relevant datasheet is included with the product.

For any questions regarding troubleshooting or performing the assay, please contact our support team at support@assaypro.com.

Thank you for choosing Assaypro.

Assay Summary

Step 1. Add 50 μ l of Standard or Sample per well.
Incubate 2 hours.

Step 2. Wash, then add 50 μ l of Biotinylated Antibody per well.
Incubate 1 hour.

Step 3. Wash, then add 50 μ l of SP Conjugate per well.
Incubate 30 minutes.

Step 4. Wash, then add 50 μ l of Chromogen Substrate per well.
Incubate 25 minutes.

Step 5. Add 50 μ l of Stop Solution per well.
Read at 450 nm immediately.

Symbol Key



Consult instructions for use.

AssayMax Human Proteinase 3 (PR3) ELISA Kit

Catalog No. EP2331-1

Lot No. 112231410

Introduction

Proteinase 3 (PR3, PRTN3), a neutral serine proteinase, is also known as myeloblastin, Wegener autoantigen, azurophil granule protein 7, and neutrophil protease p29 (1). PR3 is produced and packaged into azurophil granules during neutrophil differentiation. The mature PR3 consists of 228 amino acids and has a molecular mass of approximately 29 kDa (2). PR3 degrades connective-tissue proteins, in particular elastin, fibronectin, type IV collagen, and laminin (3). It has potent antimicrobial activity and is involved in a variety of immune defense reactions that contribute to the destruction of ingested microorganisms. Autoantibodies to PR3 are involved in the pathogenesis of autoimmune-mediated vasculitis in granulomatosis with polyangiitis (4).

Principle of the Assay

The AssayMax Human Proteinase 3 ELISA (Enzyme-Linked Immunosorbent Assay) kit is designed for detection of proteinase 3 in human **plasma, serum, saliva, urine, milk, CSF, and cell culture samples**. This assay employs a quantitative **sandwich enzyme immunoassay** technique that measures PR3 in 4 hours. A polyclonal antibody specific for PR3 has been pre-coated onto a 96-well microplate with removable strips. PR3 in standards and samples is sandwiched by the immobilized antibody and biotinylated polyclonal antibody specific for PR3, which is recognized by a streptavidin-peroxidase conjugate. All unbound material is then washed away and a peroxidase enzyme substrate is added. The color development is stopped and the intensity of the color is measured.

Caution and Warning

- Prepare all reagents (working diluent buffer, wash buffer, standard, biotinylated antibody, and SP conjugate) as instructed, prior to running the assay.
- Prepare all samples prior to running the assay. The dilution factors for the samples are suggested in this protocol. However, the user should determine the optimal dilution factor.
- Spin down the SP conjugate vial and the biotinylated antibody vial before opening and using contents.

- The Stop Solution is an acidic solution.
- This kit is for research use only.
- The kit should not be used beyond the expiration date.

Reagents

- **Human PR3 Microplate:** A 96-well polystyrene microplate (12 strips of 8 wells) coated with a polyclonal antibody against human PR3.
- **Sealing Tapes:** Each kit contains 3 pre-cut, pressure sensitive sealing tapes, which can be cut to fit the format of the individual assay.
- **Human PR3 Standard:** Human PR3 in a buffered protein base (180 ng, lyophilized).
- **Biotinylated Human PR3 Antibody (50x):** A 50-fold biotinylated polyclonal antibody against PR3 (140 μ l).
- **MIX Diluent Concentrate (10x):** A 10-fold concentrated buffered protein base (30 ml).
- **Wash Buffer Concentrate (20x):** A 20-fold concentrated buffered surfactant (30 ml, 2 bottles).
- **Streptavidin-Peroxidase Conjugate (SP Conjugate):** A 100-fold concentrate (80 μ l).
- **Chromogen Substrate:** A ready-to-use stabilized peroxidase chromogen substrate tetramethylbenzidine (8 ml).
- **Stop Solution:** A 0.5 N hydrochloric acid to stop the chromogen substrate reaction (12 ml).

Storage Condition

- Upon arrival, immediately store components of the kit at recommended temperatures up to the expiration date.
- Store SP Conjugate and Biotinylated Antibody at -20°C.
- Store Microplate, Diluent Concentrate (10x), Wash Buffer, Stop Solution, and Chromogen Substrate at 2-8°C.
- Unused microplate wells may be returned to the foil pouch with the desiccants and resealed. May be stored for up to 30 days in a vacuum desiccator.
- Diluent (1x) may be stored for up to 30 days at 2-8°C.
- Store Standard at 2-8°C before reconstituting with Diluent and at -20°C after reconstituting with Diluent.

Other Supplies Required

- Microplate reader capable of measuring absorbance at 450 nm.
- Pipettes (1-20 μ l, 20-200 μ l, 200-1000 μ l, and multiple channel).
- Deionized or distilled reagent grade water.

Sample Collection, Preparation, and Storage

- **Plasma:** Collect plasma using one-tenth volume of 0.1 M sodium citrate as an anticoagulant. Centrifuge samples at 3000 x *g* for 10 minutes. Dilute samples 1:10 into MIX Diluent and assay. The undiluted samples can be stored at -20°C or below for up to 3 months. Avoid repeated freeze-thaw cycles (EDTA or Heparin can also be used as an anticoagulant).
- **Serum:** Samples should be collected into a serum separator tube. After clot formation, centrifuge samples at 3000 x *g* for 10 minutes, and remove serum. Dilute samples 1:10 into MIX Diluent and assay. The undiluted samples can be stored at -20°C or below for up to 3 months. Avoid repeated freeze-thaw cycles.
- **Saliva:** Collect saliva using samples tube. Centrifuge samples at 800 x *g* for 10 minutes. Dilute samples 1:50 into MIX Diluent and assay. The undiluted samples can be stored at -20°C or below for up to 3 months. Avoid repeated freeze-thaw cycles.
- **Milk:** Collect milk using sample tube. Centrifuge samples at 800 x *g* for 10 minutes. Dilute samples 1:5 into MIX Diluent and assay. The undiluted samples can be stored at -20°C or below for up to 3 months. Avoid repeated freeze-thaw cycles.
- **Urine:** This kit can be used to detect **high PR3 levels** in human urine. Collect urine using sample pot. Centrifuge samples at 800 x *g* for 10 minutes and assay. The undiluted samples can be stored at -20°C or below for up to 3 months. Avoid repeated freeze-thaw cycles.
- **CSF:** Collect cerebrospinal fluid (CSF) using sample pot. Centrifuge samples at 3000 x *g* for 10 minutes. Dilute samples 1:2 into MIX Diluent and assay. The undiluted samples can be stored at -80°C for up to 3 months. Avoid repeated freeze-thaw cycles.
- **Cell Culture Supernatants:** Centrifuge cell culture media at 3000 x *g* for 10 minutes to remove debris. Collect supernatants and assay. Store the remaining samples at -20°C or below. Avoid repeated freeze-thaw cycles.

Reagent Preparation

- Freshly dilute all reagents and bring all reagents to room temperature before use.
- **MIX Diluent Concentrate (10x):** If crystals have formed in the concentrate, mix gently until the crystals have completely dissolved. Dilute the MIX Diluent Concentrate 1:10 with reagent grade water. Store for up to 30 days at 2-8°C.
- **Human PR3 Standard:** Reconstitute the 180 ng of Human PR3 Standard with 1.5 ml of MIX Diluent to generate a 120 ng/ml standard stock solution. Allow the standard to sit for 10 minutes with gentle agitation prior to making dilutions. Prepare duplicate or triplicate standard points

by serially diluting the standard stock solution (120 ng/ml) 1:2 with MIX Diluent to produce 60, 30, 15, 7.5, 3.75, and 1.875 ng/ml solutions. MIX Diluent serves as the zero standard (0 ng/ml). Any remaining solution should be frozen at -20°C and used within 30 days.

Standard Point	Dilution	[PR3] (ng/ml)
P1	1 part Standard (120 ng/ml)	120.0
P2	1 part P1 + 1 part MIX Diluent	60.00
P3	1 part P2 + 1 part MIX Diluent	30.00
P4	1 part P3 + 1 part MIX Diluent	15.00
P5	1 part P4 + 1 part MIX Diluent	7.500
P6	1 part P5 + 1 part MIX Diluent	3.750
P7	1 part P6 + 1 part MIX Diluent	1.875
P8	MIX Diluent	0.000

- **Biotinylated Human PR3 Antibody (50x):** Spin down the biotinylated antibody briefly and dilute the desired amount of the antibody 1:50 with MIX Diluent. Any remaining solution should be frozen at -20°C.
- **Wash Buffer Concentrate (20x):** If crystals have formed in the concentrate, mix gently until the crystals have completely dissolved. Dilute the Wash Buffer Concentrate 1:20 with reagent grade water.
- **SP Conjugate (100x):** Spin down the SP Conjugate briefly and dilute the desired amount of the conjugate 1:100 with MIX Diluent. Any remaining solution should be frozen at -20°C.

Assay Procedure

- Prepare all reagents, standard solutions, and samples as instructed. Bring all reagents to room temperature before use. The assay is performed at room temperature (20-25°C).
- Remove excess microplate strips from the plate frame and return them immediately to the foil pouch with desiccants inside. Reseal the pouch securely to minimize exposure to water vapor and store in a vacuum desiccator.
- Add 50 µl of Human PR3 Standard or sample per well. Cover wells with a sealing tape and incubate for 2 hours. Start the timer after the last addition.
- Wash five times with 200 µl of Wash Buffer manually. Invert the plate each time and decant the contents; hit 4-5 times on absorbent material to completely remove the liquid. If using a machine, wash six times with 300 µl of Wash Buffer and then invert the plate, decanting the contents; hit 4-5 times on absorbent material to completely remove the liquid.
- Add 50 µl of Biotinylated Human PR3 Antibody to each well and incubate for 1 hour.

- Wash the microplate as described above.
- Add 50 μ l of Streptavidin-Peroxidase Conjugate per well and incubate for 30 minutes. Turn on the microplate reader and set up the program in advance.
- Wash the microplate as described above.
- Add 50 μ l of Chromogen Substrate per well and incubate for 25 minutes or until the optimal blue color density develops. Gently tap plate to ensure thorough mixing and break the bubbles in the well with pipette tip.
- Add 50 μ l of Stop Solution to each well. The color will change from blue to yellow.
- Read the absorbance on a microplate reader at a wavelength of 450 nm immediately. If wavelength correction is available, subtract readings at 570 nm from those at 450 nm to correct optical imperfections. Otherwise, read the plate at 450 nm only. Please note that some unstable black particles may be generated at high concentration points after stopping the reaction for about 10 minutes, which will reduce the readings.

Data Analysis

- Calculate the mean value of the duplicate or triplicate readings for each standard and sample.
- To generate a standard curve, plot the graph using the standard concentrations on the x-axis and the corresponding mean 450 nm absorbance (OD) on the y-axis. The best-fit line can be determined by regression analysis using four-parameter or log-log logistic curve-fit.
- Determine the unknown sample concentration from the Standard Curve and multiply the value by the dilution factor.

Typical Data

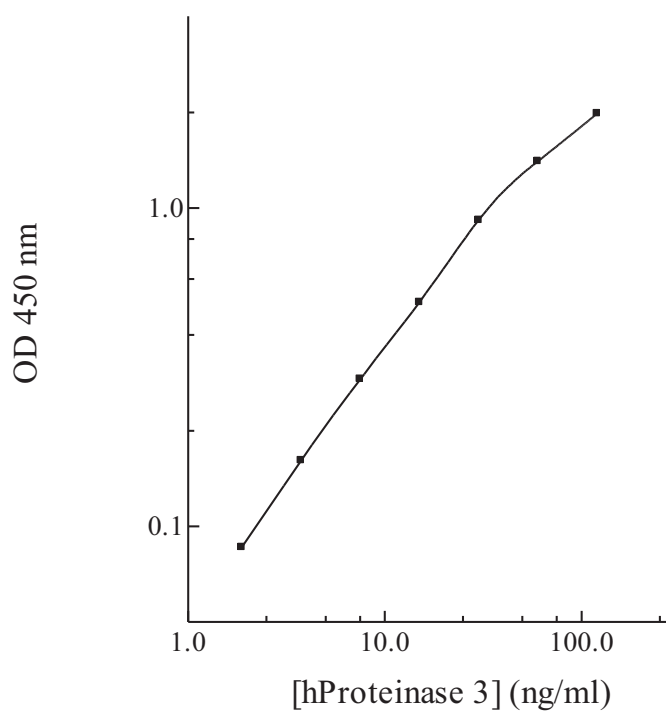
- The typical data is provided for reference only. Individual laboratory means may vary from the values listed. Variations between laboratories may be caused by technique differences.

Standard Point	ng/ml	OD	Average OD
P1	120.0	1.967 2.001	1.984
P2	60.00	1.386 1.421	1.403
P3	30.00	0.884 0.950	0.917
P4	15.00	0.505 0.507	0.506
P5	7.500	0.280 0.269	0.274
P6	3.750	0.168 0.153	0.161
P7	1.875	0.090 0.082	0.086
P8	0.000	0.028 0.025	0.026
Sample: Pool Normal, Sodium Citrate Plasma (10x)		0.932 0.880	0.906

Standard Curve

- The curve is provided for illustration only. A standard curve should be generated each time the assay is performed.

Human Proteinase 3 Standard Curve



Reference Value

- Normal human PR3 plasma levels range from 100 to 650 ng/ml.
- Human plasma and serum samples from healthy adults were tested (n=40). On average, PR3 level was 359 ng/ml.

Sample	n	Average Value (ng/ml)
Human Pool Normal Plasma	10	345
Human Normal Plasma	20	351
Human Pool Normal Serum	10	380

Performance Characteristics

- The minimum detectable dose of PR3 as calculated by 2SD from the mean of a zero standard was established to be 0.5 ng/ml.
- Intra-assay precision was determined by testing replicates of three plasma samples in one assay.
- Inter-assay precision was determined by testing three plasma samples in twenty assays.

Sample	Intra-Assay Precision			Inter-Assay Precision		
	1	2	3	1	2	3
n	20	20	20	20	20	20
CV (%)	3.6%	3.5%	2.9%	10.1%	9.5%	8.9%
Average CV (%)	3.3%			9.5%		

Spiking Recovery

- Recovery was determined by spiking two plasma samples with different PR3 concentrations.

Sample	Unspiked Sample (ng/ml)	Spike (ng/ml)	Expected	Observed	Recovery (%)
1	15.1	5.0	20.1	18.6	92%
		10.0	25.1	23.8	95%
		20.0	35.1	31.4	89%
2	30.5	5.0	35.5	35.2	99%
		10.0	40.5	41.8	103%
		20.0	50.5	49.3	98%
Average Recovery (%)					96%

Linearity

- Plasma and serum samples were serially-diluted to test for linearity.

Sample Dilution	Average Percentage of Expected Value (%)	
	Plasma	Serum
1:5	106%	104%
1:10	98%	102%
1:20	101%	96%

Cross-Reactivity

Species	Cross Reactivity (%)
Beagle	None
Bovine	None
Monkey	20%
Mouse	None
Rat	None
Swine	None
Rabbit	None
Human	100%

Troubleshooting

Issue	Causes	Course of Action
Low Precision	Use of expired components	<ul style="list-style-type: none"> Check the expiration date listed before use. Do not interchange components from different lots.
	Improper wash step	<ul style="list-style-type: none"> Check that the correct wash buffer is being used. Check that all wells are dry after aspiration. Check that the microplate washer is dispensing properly. If washing by pipette, check for proper pipetting technique.
	Splashing of reagents while loading wells	<ul style="list-style-type: none"> Pipette properly in a controlled and careful manner.
	Inconsistent volumes loaded into wells	<ul style="list-style-type: none"> Pipette properly in a controlled and careful manner. Check pipette calibration. Check pipette for proper performance.
	Insufficient mixing of reagent dilutions	<ul style="list-style-type: none"> Thoroughly agitate the lyophilized components after reconstitution. Thoroughly mix dilutions.
	Improperly sealed microplate	<ul style="list-style-type: none"> Check the microplate pouch for proper sealing. Check that the microplate pouch has no punctures. Check that three desiccants are inside the microplate pouch prior to sealing.

Unexpectedly Low or High Signal Intensity	Microplate was left unattended between steps	<ul style="list-style-type: none"> Each step of the procedure should be performed uninterrupted.
	Omission of step	<ul style="list-style-type: none"> Consult the provided procedure for complete list of steps.
	Steps performed in incorrect order	<ul style="list-style-type: none"> Consult the provided procedure for the correct order.
	Insufficient amount of reagents added to wells	<ul style="list-style-type: none"> Check pipette calibration. Check pipette for proper performance.
	Wash step was skipped	<ul style="list-style-type: none"> Consult the provided procedure for all wash steps.
	Improper wash buffer	<ul style="list-style-type: none"> Check that the correct wash buffer is being used.
	Improper reagent preparation	<ul style="list-style-type: none"> Consult reagent preparation section for the correct dilutions of all reagents.
	Insufficient or prolonged incubation periods	<ul style="list-style-type: none"> Consult the provided procedure for correct incubation time.
Deficient Standard Curve Fit	Non-optimal sample dilution	<ul style="list-style-type: none"> Sandwich ELISA: If samples generate OD values higher than the highest standard point (P1), dilute samples further and repeat the assay. Competitive ELISA: If samples generate OD values lower than the highest standard point (P1), dilute samples further and repeat the assay. User should determine the optimal dilution factor for samples.
	Contamination of reagents	<ul style="list-style-type: none"> A new tip must be used for each addition of different samples or reagents during the assay procedure.
	Contents of wells evaporate	<ul style="list-style-type: none"> Verify that the sealing film is firmly in place before placing the assay in the incubator or at room temperature.
	Improper pipetting	<ul style="list-style-type: none"> Pipette properly in a controlled and careful manner. Check pipette calibration. Check pipette for proper performance.
	Insufficient mixing of reagent dilutions	<ul style="list-style-type: none"> Thoroughly agitate the lyophilized components after reconstitution. Thoroughly mix dilutions.

References

- (1) Labbaye C *et al.* (1991) *Proc Natl Acad Sci USA*. 88(20):9253-9256
- (2) Campanelli D *et al.* (1990) *J Exp Med*. 172(6):1709-1715
- (3) Sturrock AB *et al.* (1992) *J Biol Chem*. 267(29):21193-21199
- (4) Niles JL *et al.* (1989) *Blood*. 74(6):1888-1893

Version 1.0